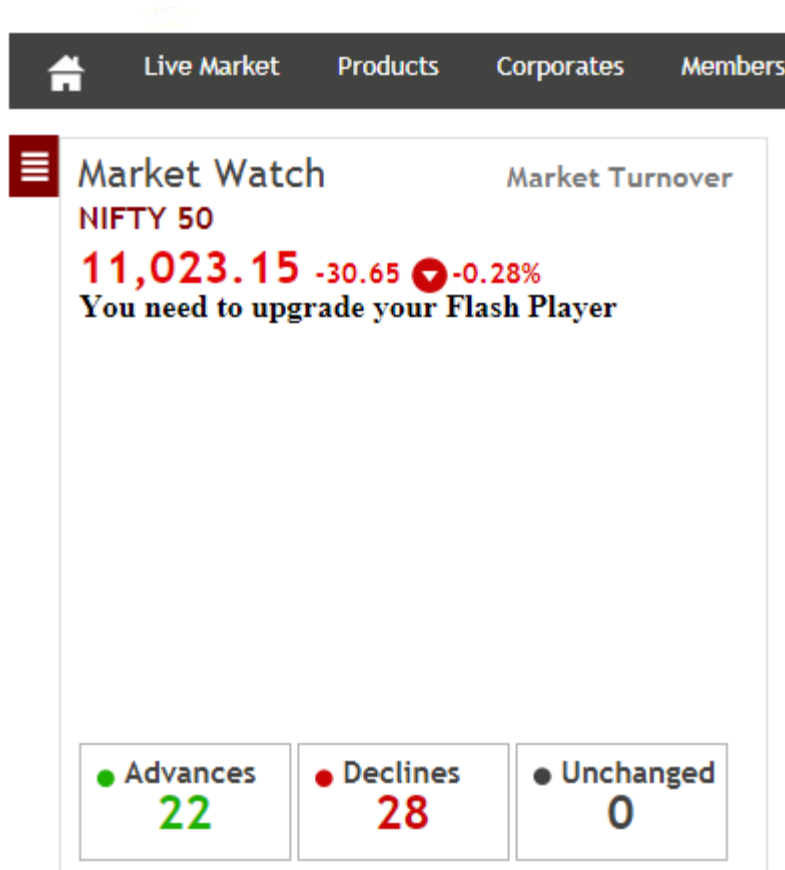


Flash Player Settings

For Chrome Browser only

27-09-2018

NSE Chart display on Homepage



If you see this message in your browser “You need to upgrade your Flash player”

Please do the following

Visit the page : <https://helpx.adobe.com/flash-player.html>

Check if the Flash Player is installed on your Desktop

1. If it is not installed – please download and install Flash player for Chrome Browser : <http://get.adobe.com/flashplayer/>
2. Once the same is installed and you still can't see the Chart – please follows the steps given on the next slide to enable “Flash Player”

Steps to enable Flash Player

- It says that Flash Player is installed but not enabled. These setting will work **only for Desktop** and not for Mobile devices

Flash Player Help

Install Flash Player in five easy steps

1. Check if Flash Player is installed on your computer

Check Now



Flash Player is pre-installed in Google Chrome, but not enabled.
You can skip the steps below. See [Enable Flash Player on Google Chrome](#).

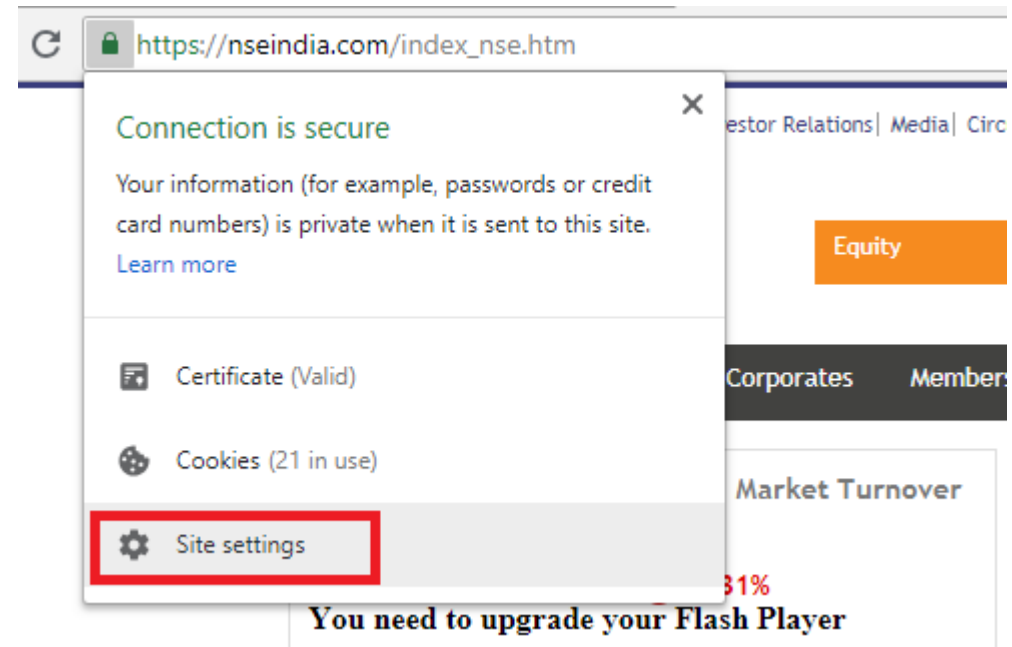
YOUR SYSTEM INFORMATION	
Your Flash Version	Flash Player disabled
Your browser name	Google Chrome
Your Operating System (OS)	Windows (Window 10)

Browser Settings

- Click on the lock icon in your browser window

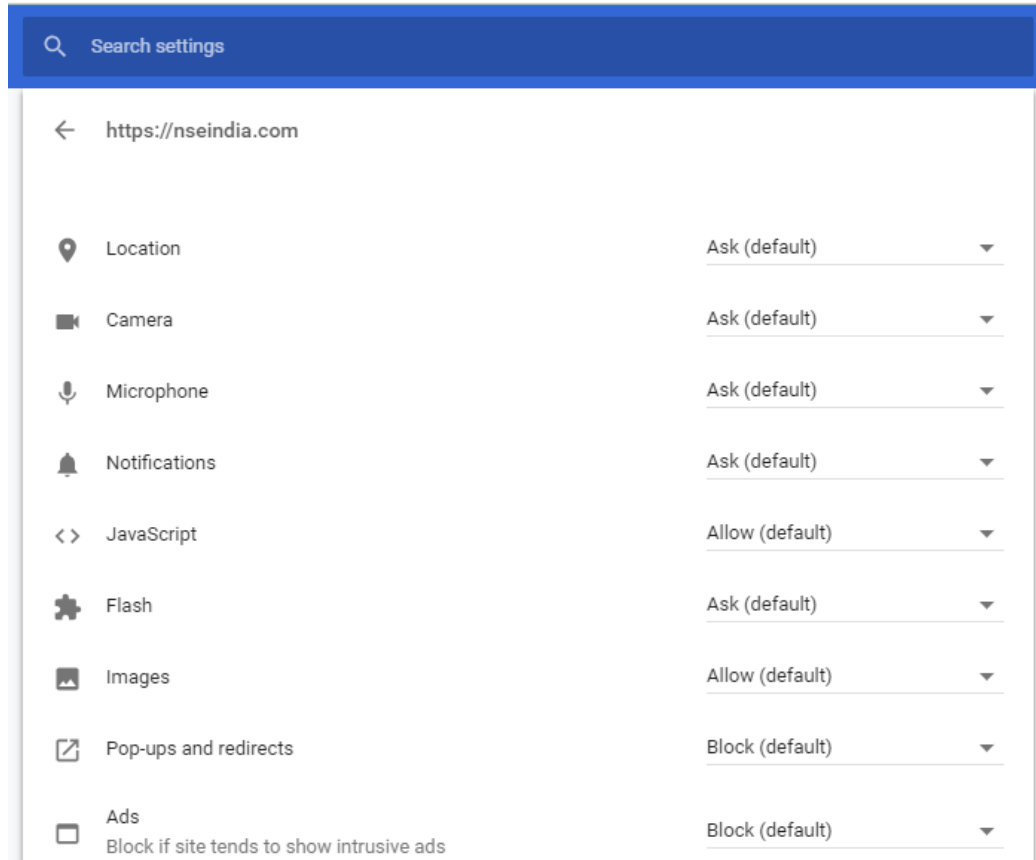


- Click on Site Settings

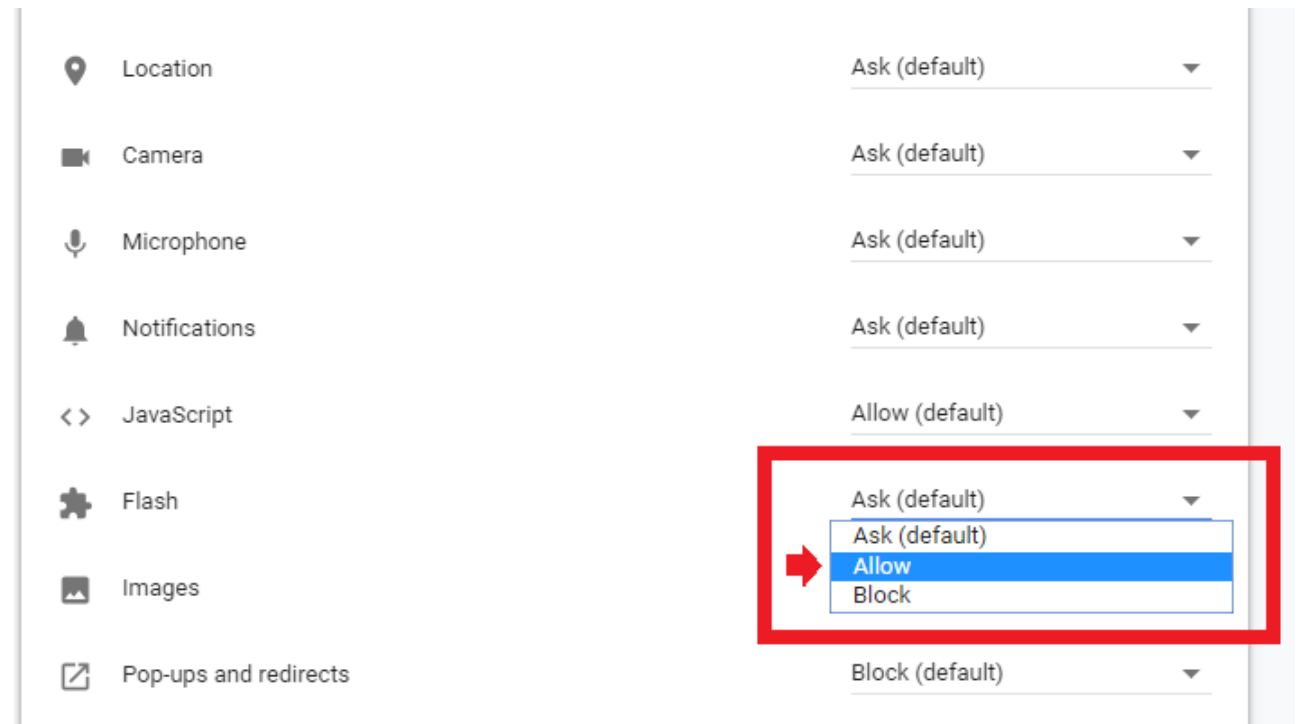


Browser Settings

- You will be directed to the Site settings page

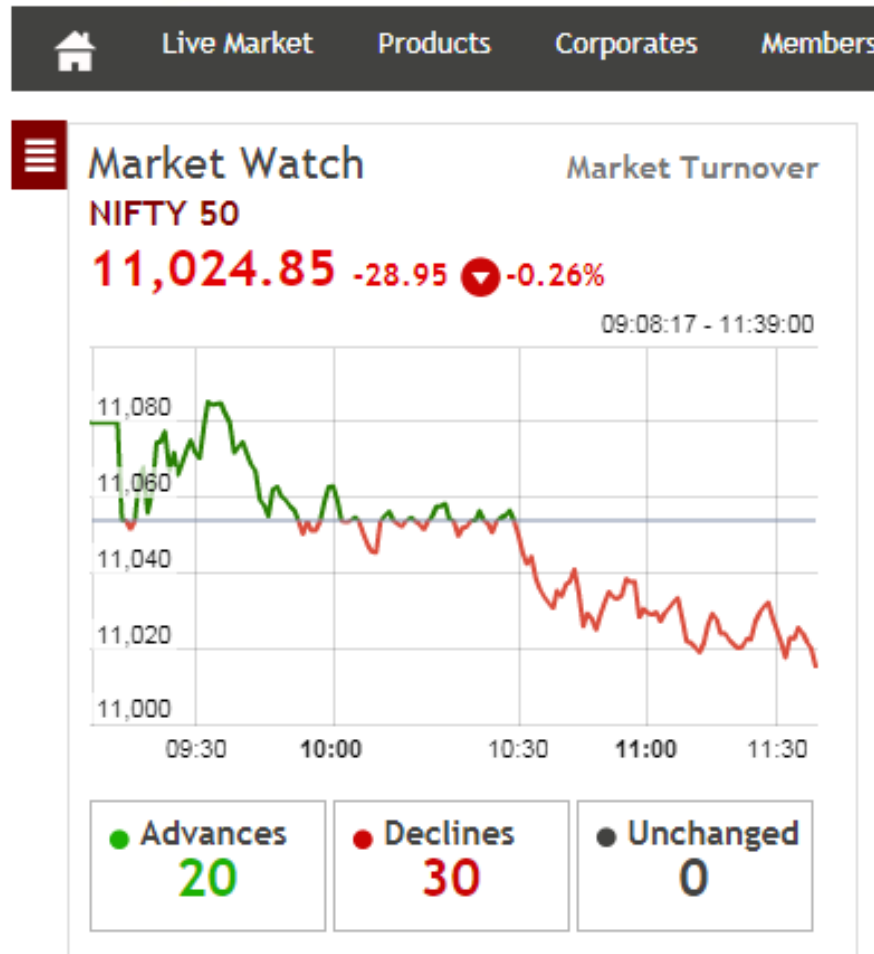


- Click on Flash drop down and select "Allow" and refresh your browser



NSE India

- The Chart will be displayed in Chrome Browser



Chrome will support Flash till 2020. Read the Blog
However Flash is not available on Android devices.

NSE will soon migrate to non-Flash based charts.

In case, if the above does not work,
please write to us at nsewebmaster@nse.co.in

Chrome will support Flash till 2020.
However Flash is not available on Android devices.

NSE will soon migrate to non-Flash based charts.

In case, if the above does not work,
please write to us at nsewebmaster@nse.co.in

Thank you

